

April 24, 2020

Dear Saint Mary's Nursery School Friends and Community,

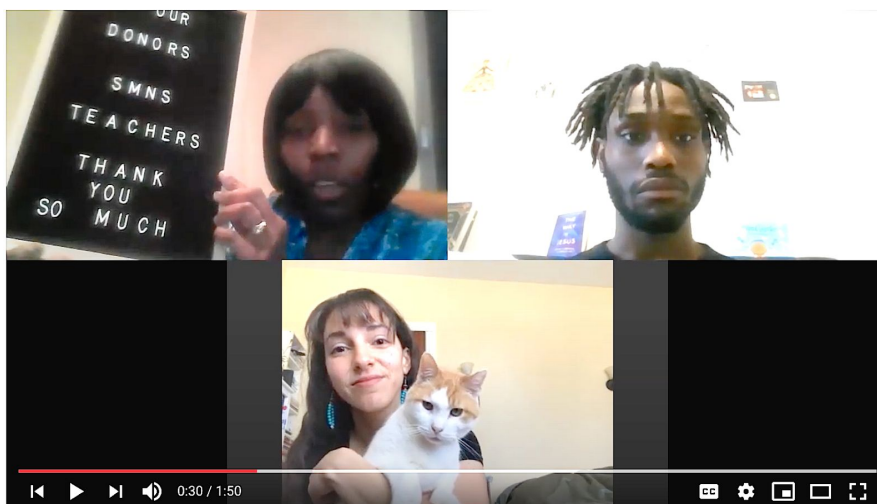
On behalf of the SMNS Board of Directors, we would like to extend our heartfelt hopes that you, your family, your business and your community are healthy and safe during this health crisis. We would love to share a message of thanks, and an update about our center.

As childcare centers are under a mandated closure, SMNS staff are working harder than ever to keep our community connected. Teachers are making videos to support families, hosting virtual meetings, and Mamatha is hosting remote play rehearsals for our graduating pre-k class.

Executive Director Traci Childress and SMNS staff are working to uncover every opportunity to stay afloat. Using our savings, we have continued to pay staff in April despite our loss of tuition. We applied for public and private sector small business support and received grants from the Philadelphia Emergency Fund for Stabilization of Early Education (PEFSEE) and the PHL Chamber of Commerce Small Business Relief Fund. We are awaiting the possibility of additional federal support through the Paycheck Protection Program. The early education sector is on the [brink of collapse](#), SMNS won't be an exception unless we have our entire community's support.

Last month, we launched the SMNS [COVID-19 Emergency Fund](#) to help sustain our organization during this closure. Thus far, we have raised over \$40,000. Donations from the sponsors of our cancelled Spring For Our School event are also sustaining us now. To those who have supported us, we express our deepest gratitude. If you are able to continue your support, we welcome your tax-deductible [donation](#) at this time. Our entire community thanks you.

Click below for a Thank You message from staff on the [YouTube channel](#) we created for children.



Thank you to SMNS families & donors from Puffins Team

To our business sponsors: we would like to support you. We can do that by sharing your stories or services on our social media platforms.

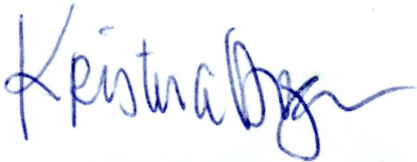
We will get through this together and look forward to holding up our community and supporting each other through these uncertain times.

On behalf of the entire board of St. Mary's Nursery School, we thank you for your support of this community. entire community thanks you.

With warm regards,



Tracy Buchanan, Board President



Kristina Dugan, Governance Chair

on behalf of the SMNS Board of Directors:

- | | | | |
|----------------|-----------------|------------|----------------|
| Mike Agnew | Tracy Buchanan | May Chang | Collin Cordoza |
| Kristina Dugan | Carolyn Johnson | Mark Karsz | Ning Li |
| Holly Mack-War | Bob Miller | Benn Roe | Neal Swisher |

Yes! I want to help sustain Saint Mary's Nursery School.

DONATE

Saint Mary's Nursery School . 3916 Locust Walk . Philadelphia, PA 19104
www.stmarysnursery.org